

TECHNICAL DATA

PCS/CTN	SF/CTN	THICKNESS	EDGE TYPE	SURFACE FINISH	ABRASION RESISTANCE (PEI)	BREAK STRENGTH	FACES	WATER ABSORPTION
6	15.48	.37	Rectified	Matte	N/A	2500 N	24	<0.5%

DCOF	FROST RESISTANT	CHEMICAL RESISTANT	THERMAL SHOCK	SCRATCH HARDNESS	CRAZING RESISTANCE	STAIN RESISTANCE	SHADE VARIATION	NOMINAL SIZE
.61	Yes	Yes	Yes	N/A	N/A	Class 4	V3	8X48

WALL RATED
 FLOOR RATED
 OUTDOOR RATED
 POOL RATED
 WET AREA

COLOR SELECTIONS



SSF-5888
WALNUT



SSF-5889
EBONY



SSF-5890
MAPLE



SSF-5890
OAK

TECHNICAL DATA

PCS/CTN	SF/CTN	THICKNESS	EDGE TYPE	SURFACE FINISH	ABRASION RESISTANCE (PEI)	BREAK STRENGTH	FACES	WATER ABSORPTION
3	15.48	.38 - .43	Rectified	Matte	N/A	1000 N	1	>10%

DCOF	FROST RESISTANT	CHEMICAL RESISTANT	THERMAL SHOCK	SCRATCH HARDNESS	CRAZING RESISTANCE	STAIN RESISTANCE	SHADE VARIATION	NOMINAL SIZE
N/A	No	A-LA	N/A	N/A	N/A	5	V4	16X48

WALL RATED

FLOOR RATED

OUTDOOR RATED

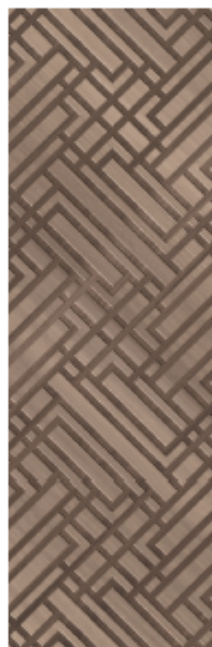
POOL RATED

WET AREA

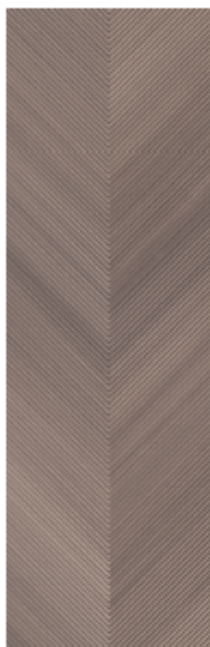
COLOR SELECTIONS



SSF-5532
CHEVRON MAPLE



SSF-5535
MID MOD WALNUT



SSF-5533
CHEVRON WALNUT



SSF-5534
MID MOD MAPLE



SSF-5531
SCALE WALNUT